

18th Annual Academic Symposium

November 13, 2024



THE WARREN ALPERT
Medical School
BROWN UNIVERSITY



Program Sponsors

Scholarly Concentrations Program

Office of Student Affairs

Office of Medical Education



Agenda

Opening Remarks: 12:15 - 1:15 p.m.

Keynote Address: **Dr. Nina Ayala**

Student Oral Presentations

1. Claire Lin and Diana Wang (co-first authors)

Infusion of Sound: Personalized Receptive Music-Based Intervention (rMBI) during Infusion Sessions

2. Dylan Bush

*Challenges in Diabetic Amputation in Solomon Islands:
The Impact of Geographic Distance from Surgical Centers*

3. Alison Meyers

Incidence and Zygosity of Multiple Births Following a Natural or Programmed Single Frozen Blastocyst Transfer Cycle

Poster Viewing: 1:15 - 3 p.m.

Poster A Session: 1:15 - 2 p.m.

Keynote Speaker



Nina K. Ayala '10 MD'14 ScM'23 is an assistant professor jointly appointed in the departments of Obstetrics and Gynecology and Psychiatry and Human Behavior at The Warren Alpert Medical School of Brown University. She completed her undergraduate and medical training at Brown University as part of the Program in Liberal Medical Education, completing a Scholarly Concentration in Medical Education. She went on to complete her ob/gyn residency at Northwestern University

and returned to complete her Maternal-Fetal Medicine Fellowship at Women & Infants Hospital. She is a clinician-researcher in the Division of Maternal-Fetal Medicine, and medical director of the Antepartum Care Unit at Women & Infants Hospital of Rhode Island. Her research focuses on leveraging resilience-building interventions to improve perinatal somatic and mental health outcomes and achieve birth equity.

Scholarly Concentration Directors 2024

Director of Scholarly Concentrations

Mariah Stump, MD, MPH, FACP, DipABLM, ABOIM

Aging

Mariah Stump, MD, MPH, FACP, DipABLM, ABOIM

Biomedical Informatics

Neil Sarkar, PHD, MLIS, FACMI
Elizabeth Chen, PhD

Caring for Underserved Communities

Fadya El Rayess, MD, MPH
Joseph Diaz, MD, MPH, FACP

Global Health

Tanya Rogo, MD
Silvia Chiang, MD

Lifestyle Medicine and Integrative Health

Mariah Stump, MD, MPH

LGBTQ Health Care and Advocacy

Chelsea Graham, DO
Denise Crooks, LICSW

Medical Education

Sarita Warriar, MD, FACP

Medical Humanities and Ethics

Jay Baruch, MD

Medical Technology, Innovation and Entrepreneurship

Geoff Capraro, MD, MPH

Physician as Communicator

Teresa Schraeder, MD

Planetary Health

Kyle D. Martin, DO, MPH
Kate Smith, PhD

Translational Research in Medicine

Najam Zaidi, MD

Reproductive Health

Rebecca Allen, MD, MPH
Daria Szkwarko, DO, MPH

Posters

Poster Categories:

- Basic Science
- Clinical Research
- Medical Policy
- Medical Education
- Medical Humanities

Programs:

Students who are part of special programs have these designations listed below their poster title.

- Brown Translation Research Program (BTR)
- Emerging Infectious Disease and HIV Scholars (H-EIDS)
- Primary Care-Population Medicine Program (PC-PM)
- Scholarly Concentrations:
 - Aging
 - Biomedical Informatics
 - Caring for Underserved Communities
 - Global Health
 - Lifestyle Medicine & Integrative Health
 - LGBTQ Healthcare and Advocacy
 - Medical Education
 - Medical Humanities & Ethics
 - Medical Technology, Innovation and Entrepreneurship
 - Physician as Communicator
 - Planetary Health
 - Translational Research in Medicine
 - Reproductive Health

Basic Science

1. Bowen, Courtney

Huang T, Lee J

Inhibition of DHX9 as a Potential Therapeutic Approach in Microsatellite Instability High Endometrial Cancer

2. Cooper, Olive

Lima L, Mendoza A, Kim N, Navarro J, Born C, Garcia D.

Utilization of a Clinically-Translatable Bacterial and Biofilm Visualization Assay as a Potential Tool to Assess Pathologic Variance in Pediatric Acute and Chronic Osteomyelitis
HEIDS

3. Forman, Elyse

D'Sa V, Pievsky M

Examining the Relationships Among Sleep, Screen Time, and Language Development in Early Childhood
PCPM

4. Kaiserman, Jacob

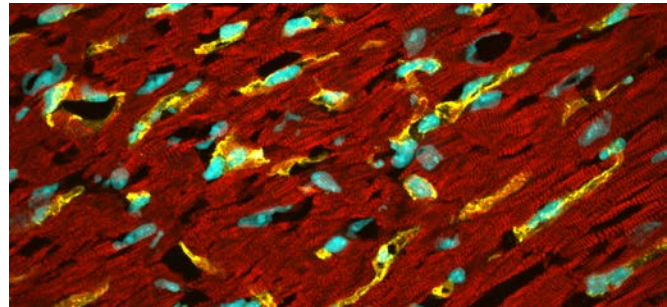
Mercado NB, Hawkins W, Vaughn-Beaucaire P, Lawler, SE

Investigating Anti-cytomegalovirus Compounds as Potential Adjuvant Therapies for Glioblastoma Translational Research in Medicine
BTR

5. Kant, Rajeev

Brinck Teixeira R, Xu C, Shin N, Broadwin M, Abid MR

Development of a Spatial Transcriptomics Workflow to Investigate Mitochondrial Antioxidants for Post-myocardial Infarction Repair
BTR



6. Kim, Ellie

Tampke E, Ma Q, Bhuptani P, Orchowski L

Timing Matters: The Impact of Disclosure Timing on Social Reactions to Sexual Violence Survivors

7. Kozel, Giovanni

Abdulrazeq H, Asaad W, Lee S

Machine Learning Models to Improve Temperature Prediction in Focused Ultrasound
Biomedical Informatics

8. Kwasnik, Matthew

Ayala A, Gray C, Chen Y

Survival and Pulmonary Injury in Neonatal Septic Challenge: VISTA
Translational Research in Medicine
BTR

9. Lin, Claire

Zhang S, El-Deiry W, Carneiro B

Novel cFLIP Inhibitor CB001 Demonstrates Cytotoxicity and Synergistic Combination with Androgen Receptor Inhibitors (ARi) in Preclinical Studies of Castration-Resistant Prostate Cancer (CRPC)
Translational Research in Medicine
BTR

10. Manthana, Rishik

Kanuparth M, Stone CR, Muir K, Banerjee D, Ehsan A, Sodha N, Feng J, and Sellke F
Cardiopulmonary Bypass Blunts Microvascular Response to Angiotensin II
Translational Research in Medicine

11. Michles, Madison

Campilan B, Godinez C, Martinez Moreno M, Sullivan PZL
Exploring the Tumor Microenvironment and Immune Cell Infiltration of Chordoma
BTR

12. Nguyen, Amy

Trivedi J, Desai S, Eadara A, Jayasuriya C
Distal-less Homeobox 5 (DLX5) as a Potential Therapeutic Target for Osteoarthritis
Translational Research in Medicine
BTR

13. Onal, Gungor Ege

Onal E, Kuburich N, den Hollander P, Mani S
The Role of Mesenchymal to Epithelial Transition (MET) in Metastasis
BTR

Clinical Research

14. Alison, Meyers

Mensah V, Vaughan D, Sakkas D

Incidence and Zygosity of Multiple Births Following a Natural or Programmed Single Frozen Blastocyst Transfer Cycle
Reproductive Medicine

15. Andemichael, Rhoda

Vicky A, Kayle S, Melissa R

Examining the Effects of Social Determinants of Health on Patient Healthcare Engagement and Maternal and Neonatal Adverse Outcomes in a Cardio-Obstetric Population in Rhode Island
Reproductive Medicine
BTR

16. Arora, Aakash

Wei G, Wisco O

Spatial Investigation Between Melanoma Outcome Measures and Skin Healthcare Accessibility: A Cross-sectional Study Caring for Underserved Communities

17. Atayde, Agata

Soehl J, Ayala N

Antepartum Agency Validation Study

18. Bae, Jee Won (Michelle)

Abraham J, Omar A, Mai M, Yoon J, Maxwell A, Ahn S, Kim D

Cholangioscopy-Guided Percutaneous Biliary Stone Extraction

19. Blancaflor, Angelo

Golijanin B, Braunagel T, Hyams E

An Analysis of State-wide Variation in Epidemiology and Treatment of Prostate Cancer in Rhode Island

20. Bowen, Courtney

Khan M, Ibanez K, Donohue D, Lee J

Underrepresentation of Minority and Elderly Populations in Gynecologic Cancer Clinical Trials: Trends Over the Past Two Decades

21. Bruzzio, Mackenzie

McDonald E, Jarilla B, Tallo V, Friedman J, Colt S

The Longitudinal Impact of Fetal Malnutrition on the Anthropometric Growth of Young Children in Leyte, the Philippines
PCPM

22. Bunch, Kaden

Kadokia N, Shaima S, Salahuddin G, Sayem A, Kim E, Genisca A, Jindal A, Gainey M, Shaw K, Faruk T, Afroze F, Jobayer M, Levine A, Garbern S

Leveraging Machine Learning to Predict Pediatric Sepsis Mortality in Bangladesh
HEIDS

23. Bush, Dylan

Roth J, Katz B, Garcia Hernandez A, Olangi M, Fitzpatrick T, Kohia S, Pikacha P, Love M, Jagilly R

Challenges in Diabetic Amputation in Solomon Islands: The Impact of Geographic Distance from Surgical Centers Global Health

24. Chang, Christopher

Lin J, Chen JS, Feler J, Sanchez D, Shao B, Anderson M, Winkler E, Ranney M, Mahta A

Predictors of 30-Day Readmission in Firearm-Related Traumatic Brain Injury - A Nationwide Readmission Database Study

Translational Research in Medicine

25. Chang, Erin

Lewkowitz A, Garfield C, Gollan J, Lee Y, O'Sullivan K, Williams D, Miller E

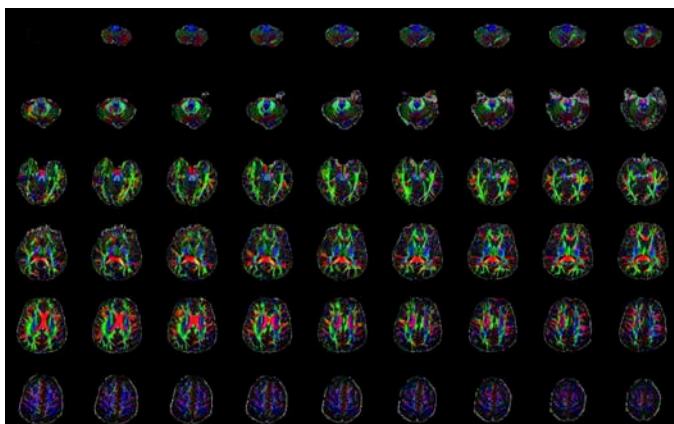
Smartphone Applications to Support Perinatal Mental Health: A Systematic Review

PCPM

26. Chen, Andrew

Mawad M, Theriault H, Poyraz V, Tendean N, Anekwe J, Yang S, Alhusaini S

Imaging of the Nigrostriatal Tract in Drug-Induced Parkinsonism



27. Collins, Cíntia

Abid R, Kole-White M, Afsana K

Development and Implementation of an Early Warning System to Prevent Severe Maternal Outcomes in Humanitarian Settings

PCPM

28. Coppinger, Austin

Umotoniwase DC, Mugemangango P, Martin KD

The Impact of Alcohol Use Disorder on Blood Transfusion Outcomes in Trauma Patients

HEIDS

29. Coppinger, Austin

Umotoniwase DC, Mugemangango P, Martin KD

Prevalence and Implications of Alcohol Misuse in Trauma Patients at the Emergency Department of the University Teaching Hospital in Kigali, Rwanda

HEIDS

30. Danaie, Darren

Leuckel S, Zonfrillo M

Disparities in Operative vs. Non-Operative Management of Blunt Spleen Injury

PCPM

31. Dandapani, Hari

Dandapani H, Lopes V, Halladay C, Kwok M, Bloomfield G, Ross D, Choudhary G, Zeng Q, Patel S, Ahmed A, Rudolph J, Wu WC, Erqou S
*Developing Machine Learning Models to Improve Cardiovascular Risk Prediction for People With HIV
HEIDS*

32. De Varona, Abel

Sarfraz A, Raymond HE, Schwarzkopf R, Arsoy D
What Effect Does a Perioperative Aspiration Event Have on Total Joint Arthroplasty Outcomes?

33. Dimbo, Ernest

Review of Non-Invasive Tools for Measuring Tissue Oxygen Saturation Post-Arteriovenous Fistulas Creation

34. Escobar, Samuel

Martinez A, Chung E
Standardized Spanish Discharge Instructions: Preliminary Examination of Baseline Data Caring for Underserved Communities

35. Fang, Ariana

Loczi-Storm A, Arora A, Hoang M, Kim E, Schroeder Q, Monroe J, Mehta A, Iurillo A, Wisco OJ
*Impact of Insurance Type on Treatment Delays: A Risk Analysis of Advanced Skin Cancer in Rhode Island
Med Tech Innovation and Entrepreneurship*

36. Frenkel, Abby

Kendall M, Ramanujam V
Evaluation of Quality of Recovery Following Acute Pain Management Interventions in Primary Total Knee Arthroplasty Surgery Patients

37. Gill, Victoria

Raker C, Olszewski A, Reagan J, Pelcovits A
Clinical Experience with Mosunetuzumab and Cytokine Release Syndrome: Results of a Single Center Retrospective

38. Goosman, Madeline

Levine A
*Comparative Analysis of the Utilization of Best Practice Dehydration Treatment Protocols and Survival of Patients with Acute Diarrhea: A Retrospective Cohort Study
HEIDS*

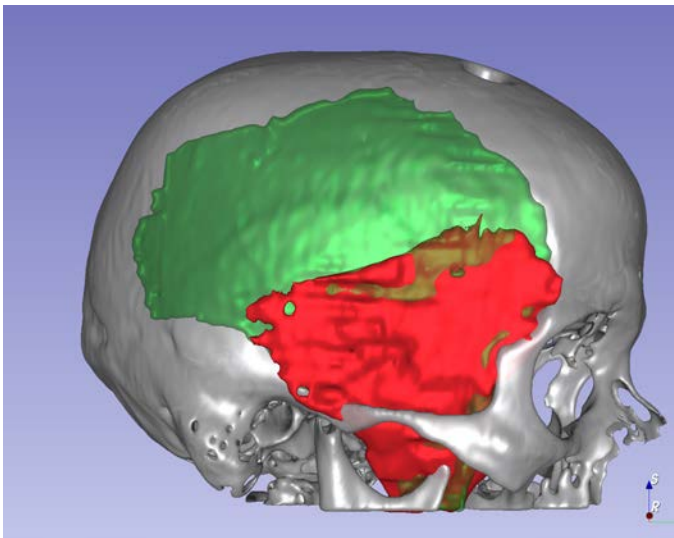
39. Goosman, Madeline

Halevi A, Heffernan D, Stephen A
*The Impact of Delay in Presentation on Older Patients with Isolated Rib Fractures
HEIDS*

40. Griffin Fiona

Shinde N, Spake C, Sastry R, Svokos K,
Woo A

*Quantitative Evaluation of Temporalis Muscle
Atrophy and Temporal Hollowing Following
Decompressive Hemicraniectomy*



43. Heilbronner, Rachel

Risner C, Birahamire J, Martin KD

*The Impact of Seasonal Variation on the
Presentation of Newly Diagnosed Tuberculosis
Patients in Rwanda
HEIDS*



41. Guimarães-Blandón, Ana

Guimaraes-Blandon A, Kole-White M

*Understanding Health Information Seeking by
Mothers of Young Children on Social Media
PCPM*

42. Haddock, Parker

Graff S

*HOLIDAAAY Care Study: Holiday On-call
Infusion, Delays, Admission, Access, and
Quality Care Study Translational Research in
Medicine*

44. Hinz, Nicole

Chan P, Lederman S

*PrEP Use and Retention Rates in the
Prevention of HIV Infection at a Community
Health Center LGBTQ Health Care and
Advocacy
HEIDS*

45. Hoang, Megan

Mirza FN, Wisco OJ, Kawaoka J

*Dermatologic Care for the Uninsured in Rhode
Island: Key Takeaways from a Free Health
Clinic Caring for Underserved Communities*

46. Hoang, Megan

Iurillo A, Khemchandani S, Arora A, Loczi-Storm A, Fang A, Schroeder Q, Mehta A, Gorrepati P, Wisco OJ

Assessing Data Gaps in Pathology Reports of Excisions with Residual Invasive Melanoma: A Retrospective Chart Review at a Rhode Island Academic Center Caring for Underserved Communities

47. Hochberger, Sam

Vohr B, Tarui T

Parental Preparedness to Care for Infants with Neonatal Seizures after Neonatal Intensive Care Unit Discharge

48. Huang, Lawrence

Huang L, Arfer K, Gutierrez-Avila I, Just A
Spatiotemporal Modeling of PM2.5 Exposures and Asthma ED Visits in New York City
PCPM

49. John, Nicolette

Zimmerman C

Optimizing Engagement and Outcomes in Office Based Treatment for Substance Use Disorders through Data Analytics

50. Kaczynski, Matthew

Taman M, Dimbo E, John N, Andemichael R, Khetpal V, Yi-Yun C, Desai S, Has P, Hulten E, Atalay M, Agarwal S, Saad M, Poppas A, Joseph J, Patel Y

Predictors of Long-Term Cardiovascular Outcomes Among Patients with Acute Myocarditis Using Cardiac MRI
HEIDS

51. Keys McKay, Charles

Harvey L, Berk J

Street Outreach-Based Hepatitis C Virus Care: An Implementation Study
PCPM
HEIDS

52. Khemchandani, Sarina

Loczi-Storm A, Hoang M, Arora A, Fang A, Mehta A, Kim E, Schroeder Q, Tsao H, Monroe J, Iurillo A, Wisco OJ

Evaluating Clinical Characteristics and Existing Data Gaps in Melanoma Cases Meeting NCCN Criteria for Sentinel Lymph Node Biopsy

53. Kim, Elleen

Genisca A, Gainey M, Shaima S, Faruk T, Uddin F, Saha A, Sultana N, Kadakia N, Afroze F, Shaw K, Chisti MJ, Levine A, Garbern S

Healthcare Providers' Perspectives on Implementing Digital Tools for Pediatric Sepsis Care in Bangladesh

54. Kim, Grace

Ruest S, Rudman W

Temporal Trends of Abusive Pediatric Fractures: A Retrospective Study
PCPM

55. Knebel, Ashley

Daher M, Balmaceno-Criss M, Singh M,
Daniels A, Diebo B

*Impact of Knee Osteoarthritis and Arthroplasty
on Full Body Sagittal Alignment in Adult Spinal
Deformity Patients*

56. Kruzan, Morgan

White J

*Mental Health and Substance Use Disorder
Among Pregnancy Associated Deaths in Rhode
Island 2018-2023*
Reproductive Medicine

57. Lewis, Jean-Luc

Taman M, Porto C

*Cryptogenic Brain Abscess in a Patient with No
Risk Factors Following Sports-Related Head
Trauma*

58. Lin, Anwen

Lien B, Usher M, Alhusaini S

*Examining the Association Between
Parkinson's Disease Brain Imaging Traits and
Common Genetic Variants Using a Polygenic
Risk Score Approach*

59. Maansour, Ali

Thyvalappil P, Chrostek C, Lewis C, Watts D,
Eberson C

*Enhancing Communication In Orthopedics: A
Study on Interpreter Use*
Caring for Underserved Communities

60. Mai, Michelle

Baird G, Maxwell AP

*Evaluation of Radiologist Bias in AI-Guided
Segmentation Radioembolization Response
Predictions for Hepatocellular Carcinoma
(HCC)*
Med Tech Innovation and Entrepreneurship

61. Malani, Kanika

Pradhan S, Roberts M, Saquib N, Snetselaar
L, Shadyab A, Eaton CB

*Joint Effect of Rheumatoid Arthritis and Diet
Quality on Cardiovascular and Mortality
Outcomes: Insights from the Women's Health
Initiative*
PCPM

62. Marquis, Carolyn

Reiad T, Dinh P, Owens B

*Epidemiology of Mountain Biking Injuries
Presenting to US Emergency Departments
from 2013 to 2022*

63. Maryanov, Nikita

Shakespeare C, Asselin N

*The Impact of a Telecommunicator CPR
Program on Out-of-Hospital Cardiac Arrest
Outcomes in Rhode Island: A Pilot Study*

64. Mawad, Mariel

Lien B, Alhusaini S, Chen A, Lin A, Usher M

*Exploring the Role of Peripheral Inflammation
in Drug-Induced Parkinsonism*

65. Mayleben, William

Murtha T, Chen M

*Longitudinal Outcomes in Young Patients with
Colorectal Liver Metastases*

66. McCallister, Brady

**Chen E, Sarkar N, McConeghy K,
Gravenstein S**

*Optimizing Dementia Prediction: EHR
Phenotyping with Natural Language
Processing in VHA Nursing Homes
Biomedical Informatics*

67. McGregor, Imani

Patel S, Drake T, Lewis V

*Nutritional Status and Patient-Reported
Outcomes in Orthopaedic Oncology Surgical
Patients*

68. Michles, Madison

**Schroeder CB, Kruzan M, Sun FW, Kassl L,
Sauerbrun-Cutler MT, Gokaslan ZL,
Sullivan PZL**

*The Role of Fertility Preservation in
Neurosurgical Spinal Ependymoma Patients: A
Single Center Review
BTR*

69. Monge, Karla

Mercurio L, Mello M J, Lin T, Baird J

*Substance Use and Adolescent Injury:
Uncovering Patterns and Risks in Emergency
Care*

70. Netto, Tiffany

*Myocardial Strain Metrics: An MRI Study on
Patients with Dilated Cardiomyopathy
Med Tech Innovation and Entrepreneurship*

71. Nimura, Clare

**Gonzalez L, Brown T, Azar S, Boucher A,
Jacob S, Karkoska K,
Van Doren L, McGann P**

*Exploring the Patient Perspective of Gene
Therapy for Sickle Cell Disease
Translational Research in Medicine
BTR*

72. Oldam, Joseph

**Porto C, Taman M, Lewis JL, Ramesh R,
Malik A**

*Patient-Specific Risk Factors' Influence on
Complications After Functional Neurosurgery
Implant Procedures*

73. Paracha, Saba

**Kang C, Lou M, Kartik R, Kim E, Michelow I,
Chen W**

*Optic Manifestations of Lyme Meningitis:
Systematic Review, Prospective, and
Retrospective Study*

74. Pietro, John

Dinh P, He E, Brett O

*Examining the Impact of Subspecialty Training
and the Social Determinants of Health on
Glenohumeral Joint Instability Treatment in
Rhode Island*

75. Pietro, John

McCallister B, Chen A, Dinh P, Owens B
No Pain More Gain: A Data-Driven Approach to Injury Reduction in Older Adults

76. Pisani, Claire

Pisani C, Sun S
Understanding the Impact of Minority Stress and Early Life Adversity Among Sexual Minority Women on Mental and Behavioral Health LGBTQ Health Care and Advocacy HEIDS

77. Powell, Jasmine

Ayala N, Sharp M, Bublitz M, Miller E
High Dispositional Optimism and the Birthing Experience PCPM

78. Restrepo, Samuel

Jayasekara A, Naeim A
Empowering the Elderly and Minority by Bringing Research Awareness through Community Engagement (E2MBRACE)

79. Rhee, Justin

Zaki HA, Collins S, Maxwell AWP, Jiao Z
Streamlining Renal Tumor Ablation Planning with Automated Tumor Segmentation and Ablation Zone Optimization Biomedical Informatics

80. Risner, Caroline

Martin KD, Heilbronner R
The Influence of Climate Change and Seasonal Variation on Malaria in Rwanda HEIDS

81. Rollo, Allegra

Sauerbrun-Cutler M, Schlichting LE
Oocyte and Embryo Cryopreservation Outcomes in Medical vs. Planned Fertility Preservation Reproductive Medicine

82. Romero, Mark

Yu M, Nguyen M, Wang K, Chou YB, Momenaei B, DeYoung C, Yonekawa Y, Shields CL
Clinical Features and Surgical Outcomes of Choroidal Melanoma-Associated Rhegmatogenous Retinal Detachment

83. Rosenberg, Mark

Harvey L, Monteiro JF
Barriers to Completion of the Hepatitis C (HCV) Cascade of Care Across the Lifespan Healthcare System in Rhode Island PCPM HEIDS

84. Satish, Ella

Barber De Brito, A
Adequacy of Prenatal Care Utilization in Rhode Island and Transparency in Delivery Trends PCPM

85. Schneider, Derek

Feldman N, Li M, Millington K
The Impact of GnRH Analogues on QTc Interval in Gender-Diverse Youth

86. Shah, Asghar

Robinson-Bostom L

Exploring Factors Modifying Depression Risk in Older Adults with Atopic Dermatitis: An Analysis of National Health and Nutrition Examination Survey (NHANES) Data Aging

87. Simkevich, MaryElizabeth

Bokhari S, Patel Y, Parent M, Bloomfield G, Richard M, Imran TF, McGeary J, Rudolph J, Choudhary G, Wu WC, Erqou S

Subclinical Cardiovascular Disease in People Living with HIV Lifestyle Medicine and Integrative Health HEIDS

88. Slater, Maxine

Griffin L, Lewkowitz A

Assessing Interventions to Increase Tdap Acceptance for Non-birthing Partners in Pregnancy (ITAPP)

89. Somasundaram, Vineethsubbu

Zhong Z, Kulkarni S, Atalay M, Ahn Sun, Bai H, Jiao Z

Predictive Modeling for Recurrent Pulmonary Embolism: A Multimodal Approach for Predictive Medicine Biomedical Informatics

90. Taman, Mazen

Teshome A, Abdulrazeq H, Chuck C, Sastry R, Ali R, Chen C, Malik A, Sullivan P, Oyelese A, Gokaslan Z, Fridley J
Current Evidence on Vasopressor Use and Spinal Cord Perfusion Pressure in Acute Spinal Cord Injury

91. Taman, Mazen

Feler J, Chen C

Dexamethasone in Neuro-Oncology: Clinical Applications, Pharmacokinetics, and Future Directions

92. Teshome, Abigail

Chatad D, Taman M, Porto C, Oldam J, Malik A

Trends in Awake versus Asleep Deep Brain Stimulation: A NSQIP Review

93. Toruner, Merih Deniz

Pour AF, Fernandez-Zapico ME, Singh R, Carr RM.

Development of a Novel Individualized Prognostic AI Pipeline for Pancreatic Ductal Adenocarcinoma (PDAC) Biomedical Informatics

94. Triedman, Miranda

Triedman M, Koroma K, Has P, Ford S, Nyce J, Swartz Topor L, Serrano Gonzalez M

Pediatric Dyslipidemia Clinical Outcomes with Telehealth Versus In-person Delivery Caring for Underserved Communities

95. Truong, Trang

MacDonnell-Yilmaz R, Belanger E

Characterization of Palliative Care Consults in Rhode Island PCPM

96. Turco, Alexandra

Miller E, Chu A

Perinatal Mood and Anxiety Disorders in Rhode Island: Barriers and Facilitators to Screening, Diagnosis, and Treatment PCPM

97. Uriarte, Sarah

**Chuck C, Feler J, Wolman D, Torabi R,
Moldovan K, Furie K, Mahta A**

*Association of Endovascular Treatment
Modalities with Functional Outcomes in
Aneurysmal Subarachnoid Hemorrhage
BTR*

98. Wolfgang, Eli

Wice M, Rudolph J

*Does Higher Socioeconomic Status (measured
by the Neighborhood Deprivation Index)
Result in Increased Use of Palliative Care
Among VA Patients with Heart Failure?
PCPM*

99. Zahiri, Keyana

Navarrete-Welton A, Song Y, Chen L, Ehsan A

*Post-Operative Atrial Fibrillation Prediction for
Cardiac Surgery Patients: A Machine Learning
Approach Using Routine 12-Lead ECG and
Clinical Variables
Biomedical Informatics*

100. Anuszewski, Maguire

Jarvis, J

Nutritional Healthcare in Rural Maine

101. Arthur, Amy

Collins A, Macon C, Elmaleh R, Pratty C,
Dunham K, Levin S,
Wightman R

*Enhancing Harm Reduction through Drug
Checking and Community Outreach: Feedback
from People Who Use Drugs on Drug Supply
Safety, Dissemination of Information, and
Service Needs*

102. Barisano, Anthony

Rivera-Hernandez, M

*Preparing for Natural Disasters in the Renal
Community: A Qualitative Study on the
Hurricane Maria Response in Puerto Rico*

103. Blancaflor, Angelo

Danaher K, Lally J, Cleofas A, Liu M,
Braunagel T, Malshy K, Hyams E

*An Analysis of Print and Online Media's
Representation of Prostate Cancer In Public
Figures*

104. Carrera, Christopher

Kim ES, Mouli VH, Fitz P, McCarthy C, Fitz W

*Reducing Patient-Produced CO2 Emissions
and Time Burden through Virtual Care
Management in Elective Orthopaedic Surgery*

105. Dagen, Nikki

Weems J, Gadbois E, Clark M, Reed G,
Thomas K, Teno J, Belanger E

*Bereaved Next-of-Kin Narratives about
Hospice Care in Assisted Living*

106. Khan, Ummara

Sarkar N

*The Impact of Medicaid Expansion on
Hospitalizations for Chronic Diseases: A
Difference-in-Differences Analysis of Diabetic
Ketoacidosis, Chronic Kidney Disease, and
Heart Disease*
PCPM

107. Rollo, Allegra

Gadson A K, Anthony K, Schlichting L E,
Schmid C, Sauerbrun-Cutler M

*Impact of the Rhode Island Insurance Mandate
on Fertility Preservation Access*
Reproductive Medicine

108. Song, Elizabeth

McQuaid E, Sarkar IN

*Characterizing Medication and Comorbidity
Profiles for Individuals with Asthma Using the
Rhode Island All-Payer Claims Database*
Biomedical Informatics

109. Vincent, Chloe

Johnson J, Sokol N

*Mistreated and Depressed: The Impact of
Discrimination from Medical Staff on Black
and Latinx Peripartum Mental Health and
Experiences with Health Care During the
Peripartum Period*
Reproductive Medicine

Medical Education

110. Baktha, Anisha

Smith M

Bridging the Gap: Effective Integration of Service and Theoretical Learning Medical Education

111. Bergsneider, Bianca

Lowenhaupt E, Owens T

Health Education Curriculum for Incarcerated Youth: Redevelopment, Implementation, and Evaluation of Medical Student-Led Course Caring for Underserved Communities
HEIDS

112. Brennan, Michael

Kosoko A, Genisca A, Mirchandani D, Tager A, Mackey J

Analysis of a Pediatric Emergency Medicine Course for Generalist Health Care Providers

113. Bunch, Kaden

Corbett L, Kozel G, McCallister B, Chou Z, Sivaprasad L

Leadership in White Coats: Evaluating the Impact of Current Training on Medical Students' Perceived Growth
Medical Education
HEIDS

114. Hamel, Marie

Mather T

Integrating Anatomy, Pathology, and Histology: Developing Clinical Vignette Questions for Medical Education
Medical Education

115. Holmes, Kaitlyn

Szkwarko D, Teck J

Evaluation of the Regional Latent Tuberculosis Infection (LTBI) ECHO Program
HEIDS

116. Ireland, Piper

Ireland P, Eldred H, Pulkin L, Schapiro B, Welsh S, Keene D, Murtha T

Sharing Serious News: Beyond the Physician's Disclosure Physician as Communicator

117. Jeng, Timmy

Smith M

Community Health Workers (CHWs): The Secret Ingredient in Medical Education
Medical Education



118. Malani, Kanika

Amaya A, van Deventer E, Comella N,
Warrier S

*Advancing Medical Education: Outcomes of
the Longitudinal Integrated Clerkship of
Warren Alpert Medical School Stratified by
Pursuit of Primary Care and Career Stage
PCPM*



119. Mansour, Ali

Taman M, Uriarte S, Munshi S, Mansour F,
Altuos K, Beqiri D

*Using LLMs to Substitute Interpreters for
Plastic Surgery Caring for Underserved
Communities*

120. Nsubayi, Celeste

Munshi S, Teshome A, Taman M, Dimbo E,
Wachana A, Grisson R

*Impact of Photo Submission Requirements
on Underrepresented Minority (URiM) Student
Acceptance Rates at U.S. MD Schools*

121. Pai, Krithi

*Risk Refined: Illuminating Optimal Breast
Cancer Screening Strategies for Rhode
Islanders*

**122. Sulca Flores, Jorge
Massingham, L**

*Genetic Conditions and the Impact of
Storytelling in Enhancing Medical Students'
Education
Medical Education*

123. Wainwright, Katherine

Chen A, Huang L, Shah A, Kruzan M,
Denison Martin K

*Cutting Waste, Not Just Tissue: Evaluating the
Environmental Impact of Bulk-Packaged
Scalpel Blades in a Medical School Anatomy
Laboratory Setting*



124. Woo, Joshua

Woo JJ, Yang A, Hasan S, Olsen R, Nawabi
DH, Williams R, Nwachukwu B,
Ramkumar PN

*Custom Large Language Models Improve
Accuracy: Comparing Retrieval Augmented
Generation and Artificial Intelligence Agents
to Non-Custom Models for Evidence-Based
Medicine
Med Tech Innovation and Entrepreneurship*

125. Vincent, Chloe

Cooper, Olive
*Health Care Opportunities Reimagined
(HealthCORE)*

Medical Humanities

126. Bogdan, Kelsey

Baruch J

Healing & Light: Exploring the Impact(s) of Lighting Design on Provider Wellbeing and Patient Outcomes in Clinical Spaces
 Medical Humanities and Ethics

127. Chou, Zishuai

Sharma S, Smith M, Tewari P, Rodriguez E, Kimberly L

Exploring the First-Person Narratives of Asian Individuals Undergoing Gender-Affirming Surgery in the United States: A Qualitative Content Analysis of Reddit Posts



128. Kaczynski, Matthew

Schiffman F

Survivor Narratives: Perceptions and Impacts Among Prostate Cancer Survivors
 Medical Humanities and Ethics

129. Keating, Evyn

Lowenhaupt E

Evaluating the HOPE for Justice Clinic: Best Practices in Juvenile Reentry and Strategies for Enhancing Clinic Attendance
Caring for Underserved Communities
 HEIDS

130. Leeke, Kathryn

Baruch J

Concerning Detachment: How Medical Schools Accredited in the U.S. Attempt to Diminish Emotional Detachment During Anatomical Dissection
 Medical Humanities and Ethics

131. Lin, Claire; Wang, Diana

Guyer D, Schiffman F

Infusion of Sound: Personalized Receptive Music-Based Intervention (rMBI) during Infusion Sessions

132. Murphy, John

Schiffman F

Faith and Healing: The Spiritual Journey of Cancer Patients
 PCPM

133. Neel, Emily

Zonfrillo M, Donaldson A, Lindberg L

Assessing Physician-Patient Communication on Sexual Health: Variations Across Sexual Orientations in the U.S. Healthcare System
 PCPM

134. Nsubayi, Celeste

Baruch J

Stigma in Medical School Education: A Comparative Analysis of ASPD, MDD, and GAD
 Medical Humanities and Ethics

135. Teshome, Abigail

Distance from Stroke Center as a Prediction of Stroke Prevalence and Mortality in the Northeastern United States
Caring for Underserved Communities

136. Wachana, Anne

Mena B, Scanlon M, Akiruga J, Kiplagat J, Szkwarko D
A Bibliometric Analysis of AMPATH Kenya Publications
Global Health
HEIDS

137. Wang, Diana

DeCosta S, Upchurch D, and Schiffman F
Playlist of the Grief Journey: Humanizing Bereavement Through Music
Medical Humanities and Ethics



Updated Submissions

138. Chang, Christopher

Lin A, Brennan M, Anuszewski M, Mello M, Knopov A
Firearm Injury Prevention Training in Undergraduate Medical Education (UME): The Current Landscape
Translational Research in Medicine

139. Inger, Joseph

Clark J, Real J, Kaiserman J, Vaughn-Beaucaire P, Hawkins W, Lawler S
mGluR3 Modulation as a Combination Therapy in Glioblastoma
Translational Research in Medicine

140. Andemichael, Rhoda

Elizabeth W
Understanding Older Adults' Motivations to Join a Smoking Cessation Trial Recruited during Lung Cancer Screening: A Qualitative Analysis

Donor-Supported Student Research Funds

Srihari S. Naidu '93 MD'97 Medical Research Fund

Keyana Zahiri, *Post-Operative Atrial Fibrillation Prediction for Cardiac Surgery Patients: A Machine Learning Approach Using Routine 12-Lead ECG and Clinical Variables*
Biomedical Informatics
Mentor: Liz Chen

Nikita Maryanov, *Rhode Island Pre-Hospital Cardiac Arrest Outcomes Records Dataset (RIPCARD): Examining the Impact of a 30min Scene Resuscitation Protocol on Functional Outcomes in Out-Of-Hospital Cardiac Arrest in Rhode Island*
Mentor: Nicholas Asselin

David C. Lewis, M.D. '57, P'84, P'87 Medical Student Research Fund

Nicolette John, *Optimizing Engagement and Outcomes in Medication-Assisted Treatment for Substance Use Disorders through Data Analytics*
Mentor: Cara Zimmerman

Jee Won Bae, *Quality of life affected by gastric variceal bleeding control: TIPS VS BRTO*
Mentor: Daehee Kim

Timmy Jeng, *Contextualizing Community Health Workers (CHWs)—Examining CHWs' Role and Impact in the Healthcare System within the Preclerkship Curriculum*
Medical Education
Mentor: Megan Smith

Morgan Kruzan, *Mental Health Conditions Among Pregnancy-Associated Deaths In Rhode Island 2018-2023*
Reproductive Health
Mentor: Jordan White

Hsu Pan Family Medical Student Research Fund

Tiffany Netto, *Giving a Voice to a Unique Community: Addressing Rare Disease Need in Rhode Island*
Mentor: Edward Hulten

Parker Haddock, *HOLIDAAAY Care Study: Holiday On-call Infusion, Delays, Admission, Access and Quality Care Study*
Translational Research in Medicine
Mentor: Stephanie Graff

Basaviah/Ganesan Family Medical Student Research Fund

Merih Deniz Toruner, *Development of a novel individualized prognostic and therapeutic AI pipeline for pancreatic ductal adenocarcinoma*
Biomedical Informatics
Mentor: Ritambhara Singh

Atayde Marina Perez Atayde, *Antepartum Agency Project*
Mentor: Nina Ayala

Angelo Blancaflor, *An analysis of state-wide variation in epidemiology and treatment of prostate cancer in Rhode Island*
Mentor: Elias Hyams

Fred M. Roddy Foundation Endowment for Medical Student Research

Chloe Vincent, *Mistreated and Depressed: The impact of discrimination from medical staff on Black and Latinx peripartum mental health and experiences with healthcare during the peripartum period*
Reproductive Health

Mentor: Natasha Sokol

Dylan Bush, *Investigating Barriers and Facilitators to Preventing Amputation in Solomon Islands: A Qualitative Exploration of Patient Experiences and Healthcare Worker Perspectives*
Global Health

Mentor: Daria Szkwarko

Andrew Chen, *Imaging the Nigrostriatal Pathway In Drug-Induced Parkinsonism*

Mentor: Saud Alhusaini

Ernest Dimbo, *The Impact of Arteriovenous Fistulas on Upper Extremity Perfusion and Wound Healing: A Prospective Study*

Mentor: Amy Kite

Samuel Hochberger, *Parental Perception of Self-Preparedness to Care for Infants with Neonatal Seizures*

Mentor: Tomo Tarui

Sarina Khemchandani, *Predictive Modeling of Advanced Skin Cancer in Rhode Island, A Geospatial Risk Analysis with a Focus on Geographic Factors like Proximity to Care and Skin Cancer Influencers*

Mentor: Oliver Wisco

Brady McAllister, *Optimizing Dementia Prediction: EHR Phenotyping with Natural Language Processing in VHA Nursing Homes*
Biomedical Informatics

Mentor: Neil Sarkar

Alison Myers, *Incidence and Zygosity of Multiple Births Following Single Frozen Blastocyst Transfer Cycle*

Mentor: Virginia Mensah

Poster Judges

Many Thanks to Our Poster Judges!

Chanika Phornphutkul

Nina Ayala

Laurie Griffin

Sarita Warriar

Kate Millington

Melissa Lauren Russo

Vendhan Ramanujam

Najam Zaidi

Sadia Iftikhar

Elizabeth Smith

Zhicheng Jiao

Kyle Martin

Kaitlin Lipner

Fizza Gillani



THE WARREN ALPERT MEDICAL SCHOOL | BROWN UNIVERSITY





THE WARREN ALPERT MEDICAL SCHOOL | BROWN UNIVERSITY







Contact Information

Stephanie Chow Garbern, MD, MPH, FACEP
Director of Medical Student Research
sgarbern@brown.edu

Office of University Communications | MP-4003BMED25
© Brown University 2024. All Rights Reserved.

